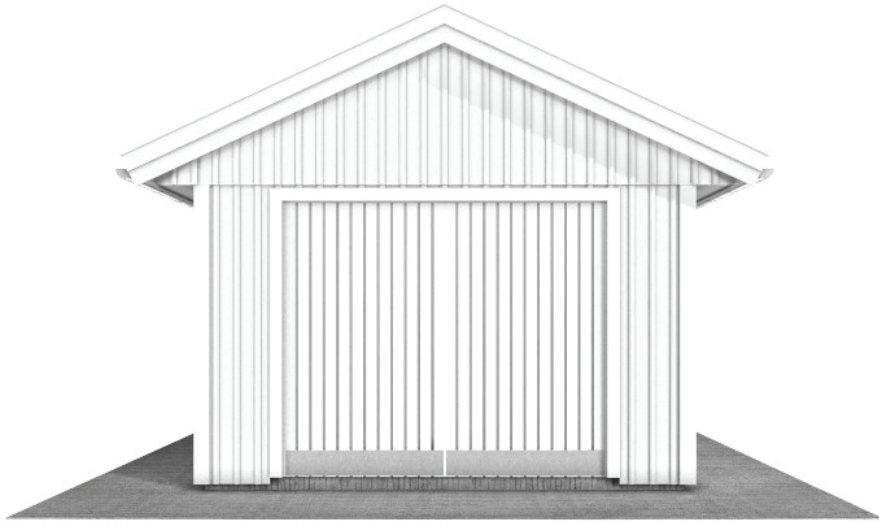


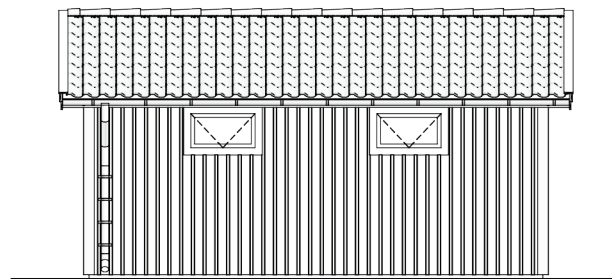
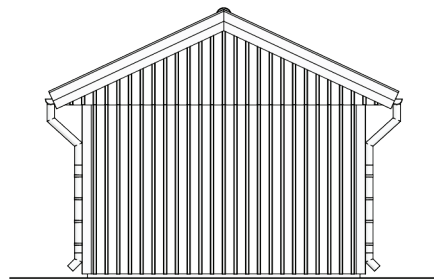
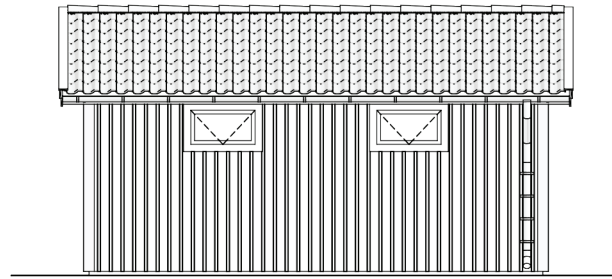
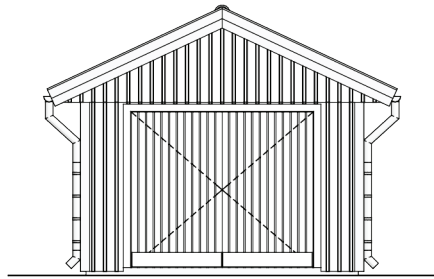


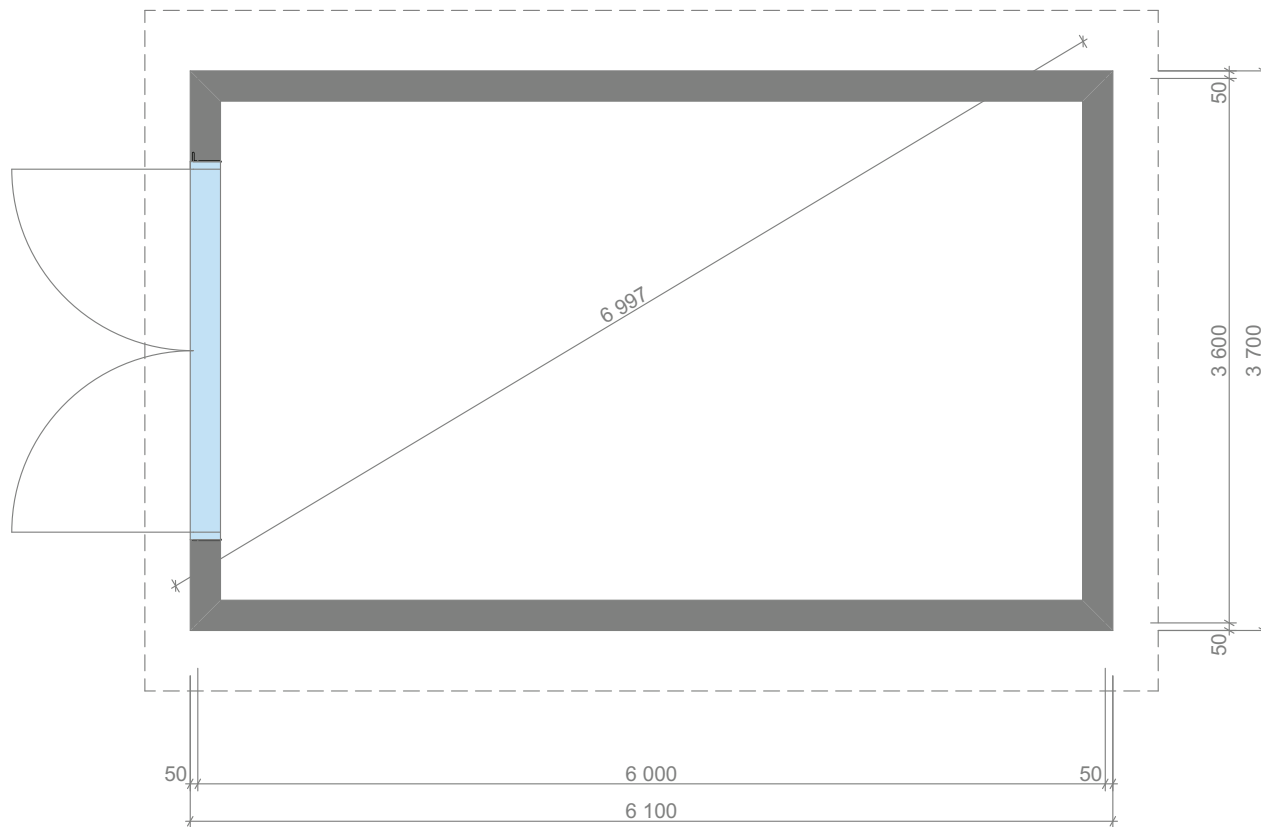
# Product sheet

Single garage. 3.6 x 6.0 m

Price 7.360 EUR incl. VAT







## **INCLUDED IN PACKAGE**

### **GENERAL INFORMATION**

Wall blocks - width 1.2 m including sill, hammer sill and frame studs in dimension 45 x 145 mm of construction timber in strength class C24.

The wall blocks consists of northern spruce 20 mm of thickness vertical panel board, ventilation air gap battens 45 x 45 mm cc 600, light windshield with high tear strength and high diffusion parameters.

The sill board, which is pressure impregnated in wood protection class NTR/A. Sill and hammer boards are prepared as to be connected half-in-half in the corners. For ventilation of the outer panel, ventilation air gap battens 45 x 45 mm are included to be placed horizontally on the outside of the studs.

Finished trusses cc 1200 and gable ends with nailed up windscreen, battens and partially nailed vertical facade panel boards - all for quick assembly. The material in the roof truss is construction timber in strength class C24 snow zone 2.5. The nodes are performed with nailing plates symmetrically placed on both sides and nailed or screwed with anchor nail 4.0 - 35 mm, or anchor screw. Dimensions and number of nails or screws are calculated for snow zone 2.5.

Finishing roof material - profiled 0.6 mm of thickness steel sheets, coated with black or red color in matt texture. The surface layer of the roof plate has full 20 year guarantee. Details such as ridge pan/ridge plate with ridge seal, windshield plate, foot plate and fastening details are included. Roof drainage with downspouts and gutters is also included, all adapted and complete with fastening details.

Ceiling battens 45 x 70 mm cc 400 which as a popular request from our clients was updated in our standard package this year. This solution is suitable for most of inner finishing materials to be fixed on the ceiling.

All exterior visible boards and panels are primed (except ends of the boards) in white water based alkyd primer. This can be overpainted with all types of paint, except mud paint such as FALU RÖDFÄRG paint and oil based paint.

Finishing should be done with two coats of top paint. Finishing must be done as soon as possible, but no later than within 2 months.

Primed panel is not suitable for FALU RÖDFÄRG paint and oil based paints. Then we recommend our untreated panel.

### **ASSEMBLY PACKAGE**

Sill waterproof isolation for guaranteed moisture protection

Diffusion sheet both for roof and exterior walls

Screws 6 x 90 mm, nails 3,4 x 100 mm, 2,8 x 75 mm

Expander sleeves for mounting in concrete or LECA attachment

Angle irons with anchor screws for roof truss mounting

Ventilation grills for cold winds

Insect nets for eaves and pin hammers

### **GARAGE DOORS, DOORS, WINDOWS**

4 units. Window without bars. 900 x 500(h) mm

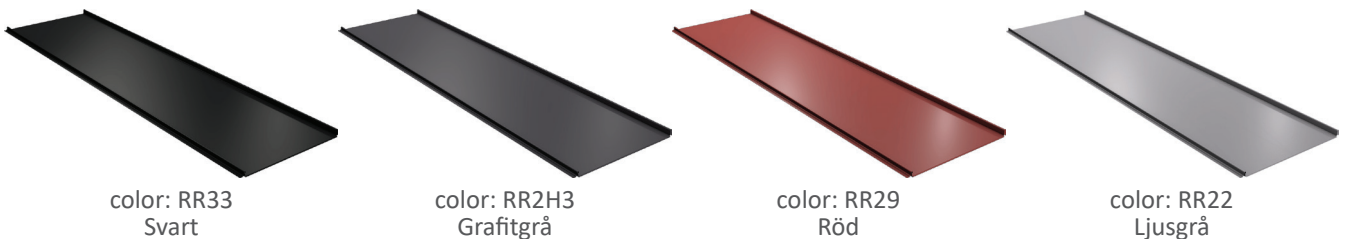
1 unit. Frame hinged garage doors. 2500 x 2100(h) mm

## ABOUT MATERIALS

### ROOFING

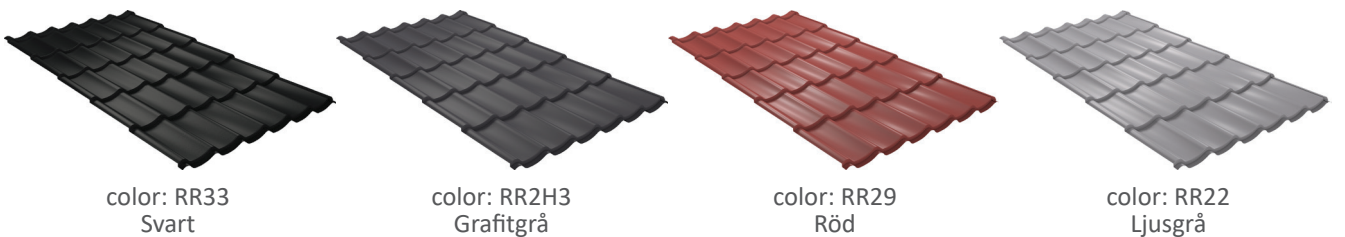
#### STEEL ROOFING SHEET RUUKKI CLASSIC C PROFILE

Ruukki Classic C is a high-class steel roof with unique look. Its profile resembles traditional seamed roofing but at the same time it is modern and stylish. It suits a variety of architectural styles and it is an excellent choice also for low-pitched roofs. If you are looking for timeless and long-lasting beauty, choose Ruukki Classic. It's tough and easycare. It also has a very fine finish. You don't need to fasten any screws on the eaves, for example. Steel roofing sheets Classic C are available in several different colors. Below you can see which ones are our suggested.



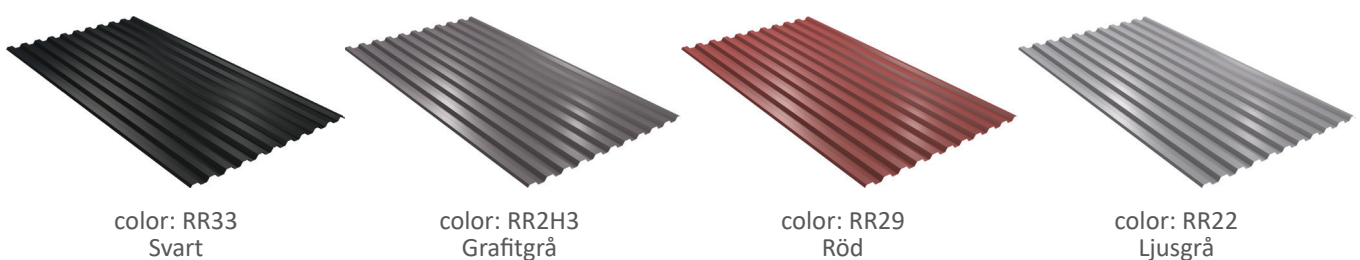
#### STEEL ROOFING SHEET RUUKKI MONTERREY PROFILE

Ruukki Monterrey is our most popular model and is an excellent fit for a rich variety of landscapes and houses. And thanks to its lower profile, Monterrey gives your roof a tranquil appearance. Ruukki Monterrey gives your roof a touch of elegance. Design expresses the tradition of tiles roofs. Steel roofing sheets Monterrey are available in several different colors. Below you can see which ones are our suggested.



#### STEEL ROOFING SHEET RUUKKI T20 PROFILE

For all types of buildings. Profile T20 provides a straight lined solution for versatile roofing needs, ranging from modern private houses to refurbishment of rural buildings. Due to the linear and rigid form of the sheets, Profile T20 is aesthetically pleasing and easy to install, not only on new constructions, but also on existing rafters in renovation applications. Steel roofing sheets T20 are available in several different colors. Below you can see which ones are our suggested.





## CONCRETE TILES BENDERS PALEMA 2-BARREL PROFILE.

Benders Palema 2-barrel is the best selling roof tile profile in Sweden since 60s. It has a high durability with Bender's own production technology which means that your garage will stay nice for decades and garage itself will keep its value compared to others.

These concrete tiles are available in several different colors. Below you can see which ones are our suggested.



color: Svart



color: Tegelröd



color: Röd



color: Ljusgrå

## RAIN WATER SYSTEM.

We use high quality roof drainage from Ruukki. Gutters and downpipes are included as standard and are available in the following standard colors. Below you can see which ones are our suggested. Other colors are offered on request.



color: RR33  
Svart



color: RR20  
Vit



color: RR23  
Mörkgrå

## ROOF STEEL TIN PROFILES

Our garages and carports include all the tin profiles needed. We use high quality steel made by Ruukki for profiled tins. Roof steel tins are available in the Ruukki standard colors (RR33 Svart, RR20 Vit, RR23 Mörkgrå, RR29 Röd). Depending on the garage model and if you have doors and windows, the following are included.



Fotplåt



Underbleck



Vindskiva



Överbleck

## FACADE PANEL BOARD

All our exterior panels are made of spruce in wood quality G4-2 or better to guarantee long durability. Panel boards are primed in white water based alkyd primer.



Lockläktpanel  
Panel 22 x 95/120 mm  
Lock 22 x 95/120 mm



Panel med Lockläkt  
Panel 22 x 120/145 mm  
Lockläkt 22 x 45 mm

## SLIDING SECTIONAL GARAGE DOOR BY HÖRMANN

The Hörmann LPU42 is a 42mm thick insulated double skinned steel sectional garage door of the highest quality construction and is the flagship sectional garage door in the Hörmann range of domestic garage doors. The most common model is the Hörmann LPU42 M Ribbed Silkgrain, which is a fully insulated overhead sliding door. Gate motor can be purchased for the gates.



S Ribbed RAL 9016  
Woodgrain surface  
2500 x 2100(h) mm



M Ribbed RAL 9016  
Silkgrain surface  
2500 x 2100(h) mm



L Ribbed RAL 9016  
Woodgrain surface  
2500 x 2100(h) mm



## ENTRANCE DOORS

Front door with stylish and timeless design.

The frame is made of solid wood and the door is filled with polystyrol that insulates heat and can withstand humidity. The double solid 0.4 mm thick aluminum plates in the design ensure the stability and shape holding of the door.

Comes standard with Assa lock (8765) (excluding lock cylinder in order you could have same key as in the main house)

Technical information: Modular dimensions: M10x21

Door dimensions: 990 x 2088 mm

Hanging: right or left

Thickness door blade: 62 mm

Colour: NCS S 0502-Y



Door without windows  
D1  
1000 mm x 2100(h) mm



Door with small windows  
D2  
1000 mm x 2100(h) mm



Door with large windows  
D3  
1000 mm x 2100(h) mm

## WINDOWS

Simple wooden windows in traditional style. Easy-to-care windows with 2-glass insulating panes in a simpler construction and profiled interior details. Suitable for those who want to upgrade from older connected windows. Made of Nordic pine. The insulating capability of the basic version gives a standard U-value of 1.5.

As a standard option in our garages, we have selected some window types of 2-glazed insulating glass. Frame of all windows are painted white NCS S 0502-Y.

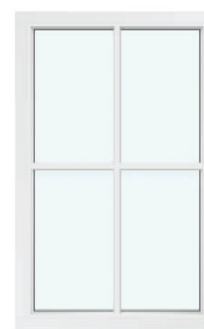


Window without bars

Our suggested dimensions:

900 mm x 1200(h) mm  
900 mm x 1600(h) mm  
900 mm x 2000(h) mm  
500 mm x 2000(h) mm  
500 mm x 500(h) mm  
900 mm x 600(h) mm

Including external windows sills and external lining



Window with bars

## WINDOWS AT THE GABLE ENDS

Simple wooden windows in traditional style. Easy-to-care windows with 2-glass insulating panes in a simpler construction and profiled interior details. Made of Nordic pine. The insulating capability of the basic version gives a standard U-value of 1.5.

We have selected some window types of 2-glazed insulating glass. Frame of all windows are painted white NCS S 0502-Y.



Window without bars

Our suggested dimensions:

900 mm x 1200(h) mm

Including external windows sills and external lining



Window with bars

## INSULATION PACKAGE

Buildings are delivered as standard with crossed 145 mm wall insulation. The roof gets about 240 mm as standard depending on the dimension of the subframe.

KNAUF lambda 35 are insulation boards with the size 600 × 1200 mm. Everything is adapted to the wall blocks and the quantity is calculated by us.

All insulation packages also include pre-cut intermediate posts to be able to cross the insulation and to create a cc 600 for interior cladding. Wind guide for eaves.

Age-resistant plastic for walls and ceilings, and 28 × 70 mm cc 300 for ceilings. Drive for windows and doors. Everything prepared for any interior cladding.

## OTHER GARAGE DOORS

### FOLDING GARAGE DOORS OPTION

Folding door is a garage door that is suitable when you want extra height or do not want the door to have rails that go inside the roof of your garage. We have chosen to work with PRIDO, which is one of Europe's largest suppliers of folding doors. Contact us to discuss folding door option for your garage.

### TILT GARAGE DOORS OPTION

Tilt garage door is designed as a whole door leaf that tilts upwards and stays up in the ceiling. This is a garage door model that has been around for a long time but has also been developed a lot. The modern tilting doors have fewer mechanical parts than a overhead sliding door, which is why they require less maintenance and usually last longer. A swing gate is also very easy, and quick to assemble. Swing gates are available as both insulated and uninsulated and are available in most colors, designs and sizes. Contact us to discuss tilt garage door option for your garage.

### FRAME HINGED GARAGE DOORS OPTION

The frame hinged garage door is designed as a double door. Since it has no roof rails, the frame hinged doors fits well in garages where you do not want roof rails to steal ceiling height. Therefore, a frame hinged garage door fits well. Contact us to discuss frame hinged garage door option for your garage.

## OPTIONS

### GARAGE HEIGHT

H = 2.2 m	+	0.00 €	Standard
H = 2.5 m	+	215.00 €	Optional
H = 2.7 m	+	480.00 €	Optional

### ROOF ANGLE

Roof trusses for 25° angled roof	+	0.00 €	Standard
Roof trusses for 30° angled roof	+	260.00 €	Optional
Roof trusses for 35° angled roof	+	435.00 €	Optional

### ROOF FINISHING MATERIAL AT THE 25° ROOF ANGLE

Steel roofing sheet RUUKKI T20 PROFILE	+	0.00 €	Standard
Steel roofing shee RUUKKI MONTERREY PROFILE	+	230.00 €	Optional
Steel roofing shee RUUKKI CLASSIC C PROFILE	+	280.00 €	Optional
Concrete tiles BENDERS PALEMA 2-BARREL PROFILE	+	150.00 €	Optional

### FAÇADE PANEL BOARD AT THE GARAGE CEILING HEIGHT 2.2 M

Lockläktpanel	+	0.00 €	Standard
Panel med Lockläkt	+	180.00 €	Optional

### FAÇADE PANEL BOARD COLOR AT THE GARAGE CEILING HEIGHT 2.2 M

Water based primer - Vit	+	0.00 €	Standard
Falu Vapen Rödfärg - Röd	+	355.00 €	Optional
Falu Vapen Rödfärg - Svart	+	355.00 €	Optional
Falu Vapen Rödfärg - Ljusgrå	+	355.00 €	Optional

### WINDOWS OPTIONAL

Window without bars. 900 x 500(h) mm	+	230.00 €	Optional
Window without bars. 900 x 900(h) mm	+	520.00 €	Optional
Window with bars. 900 x 900(h) mm	+	560.00 €	Optional
Window without bars. 900 x 1200(h) mm	+	590.00 €	Optional
Window with bars. 900 x 1200(h) mm	+	625.00 €	Optional
Window without bars. 900 x 1600(h) mm	+	550.00 €	Optional
Window without bars. 900 x 1600(h) mm	+	595.00 €	Optional
Window without bars. 900 x 2000(h) mm	+	580.00 €	Optional
Window with bars. 900 x 2000(h) mm	+	635.00 €	Optional
Window with bars. 500 x 2000(h) mm	+	350.00 €	Optional
Window without bars. 500 x 500(h) mm	+	380.00 €	Optional
Half round window. 1000 x 500(h) mm	+	460.00 €	Optional

### ENTRANCE DOORS OPTIONAL

D1 1000 x 2100(h) mm	+	400.00 €	Optional
D2 1000 x 2100(h) mm	+	495.00 €	Optional
D3 1000 x 2100(h) mm	+	495.00 €	Optiona

#### GARAGE DOORS OPTIONAL

Frame hinged garage doors. 2500 x 2100(h) mm	+	890.00 €	Optional
Tilt garage doors. 2500 x 2100(h) mm	+	980.00 €	Optional
Sliding sectional doors. 2500 x 2100(h) mm. H ≥ 2.5 m	+	1,010.00 €	Optional
Sliding sectional doors. 3500 x 2100(h) mm. H ≥ 2.5 m	+	1,790.00 €	Optional
Sliding sectional doors. 4700 x 2100(h) mm. H ≥ 2.5 m	+	2,750.00 €	Optional
Folding doors. 2900 x 2700(h) mm. H ≥ 3.0 m	+	2,000.00 €	Optional
Folding doors. 2900 x 3200(h) mm. H ≥ 3.5 m	+	2,050.00 €	Optional
Folding doors. 3500 x 3200(h) mm. H ≥ 3.5 m	+	2,180.00 €	Optional
Folding doors. 3500 x 3700(h) mm. H ≥ 4.0 m	+	2,255.00 €	Optional
Folding doors. 4100 x 3700(h) mm. H ≥ 4.0 m	+	2,400.00 €	Optional
Folding doors. 4100 x 4400(h) mm. H ≥ 4.7 m	+	2,590.00 €	Optional

#### INSULATION PACKAGE

Standard 145 mm of insulation thickness Main frame studs 45 x 145 mm	+	1,580.00 €	Optional
Premium 195 mm of insulation thickness Main frame studs 45 x 195 mm	+	1,860.00 €	Optional
Additional 45 mm of insulation thickness	+	290.00 €	Optional